



Metal Point Rivet Shelving

Pick smarter, organize better with direct access storage

interlake
 **MECALUX**



Metal Point boltless shelving

This shelving has endless uses and applications in your warehouse, office or retail establishment. It holds any kind of small to medium load you need to store. Keep everything in perfect order in a Metal Point shelf that is right for you!

Thanks to the quality of the steel, the advanced manufacturing systems and its simple yet exclusive assembly, Metal Point shelving is far superior to other picking systems on the market.

Customizable shelves are available with wire decking or standard particle board.



Advantages

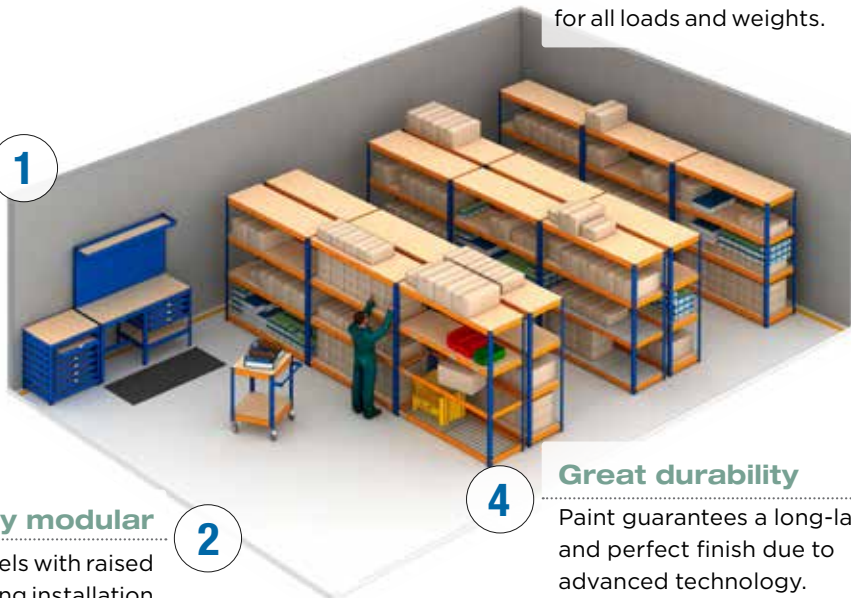
1 Easy to assemble

All pieces fit together quickly and easily. Simply use a plastic or rubber mallet for a perfect boltless assembly.



2 Fully modular

Extra modules or additional levels with raised walkways can be added, making installation possible in any location or for any business.



3

Versatile

Metal Point shelves are available for all loads and weights.

4

Great durability

Paint guarantees a long-lasting and perfect finish due to advanced technology.





Our finish on color combines perfectly with our boltless selective frames

The professional look and sturdy design of Interlake Mecalux rivet shelving make it highly-suited to any place of business.

The posts and beams mean this system is also a good fit for a home workshop, record storage or as a merchandise display in points-of-sale.

Add on more boltless units or rearrange shelving levels easily and as your needs expand.



Metal Point Plus

Ideal for storing heavy items or products in your warehouse, workshop, store, business, office or any other industrial premises. Metal Point is available in a variety of sizes and can be adapted to suit any need.

The simple structure makes it possible to install several load levels, up to a maximum 144.57" high. It is also easy to extend the warehouse's length simply by adding as many modules as necessary.

Particle board panels are the most commonly used, as they provide support for up to 2,112 lbs, uniformly distributed per load level.

Standard colors

Posts



RAL 5019



RAL 7037

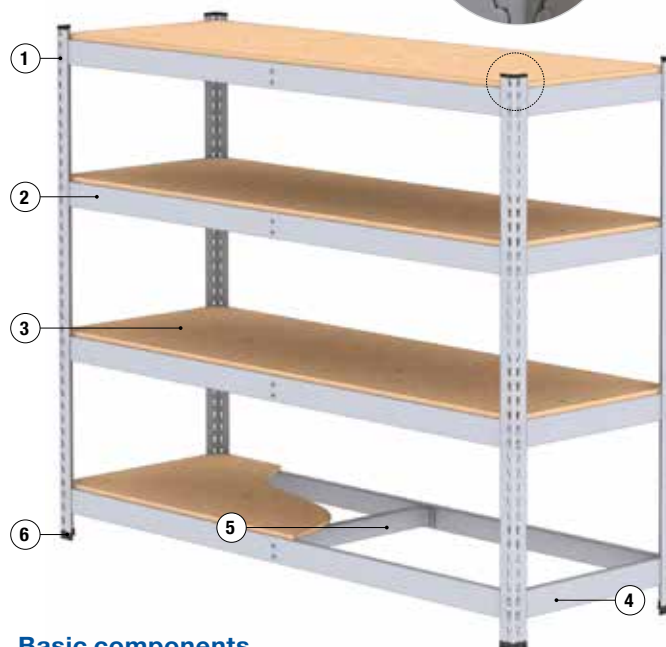
Cross beams



RAL 2004

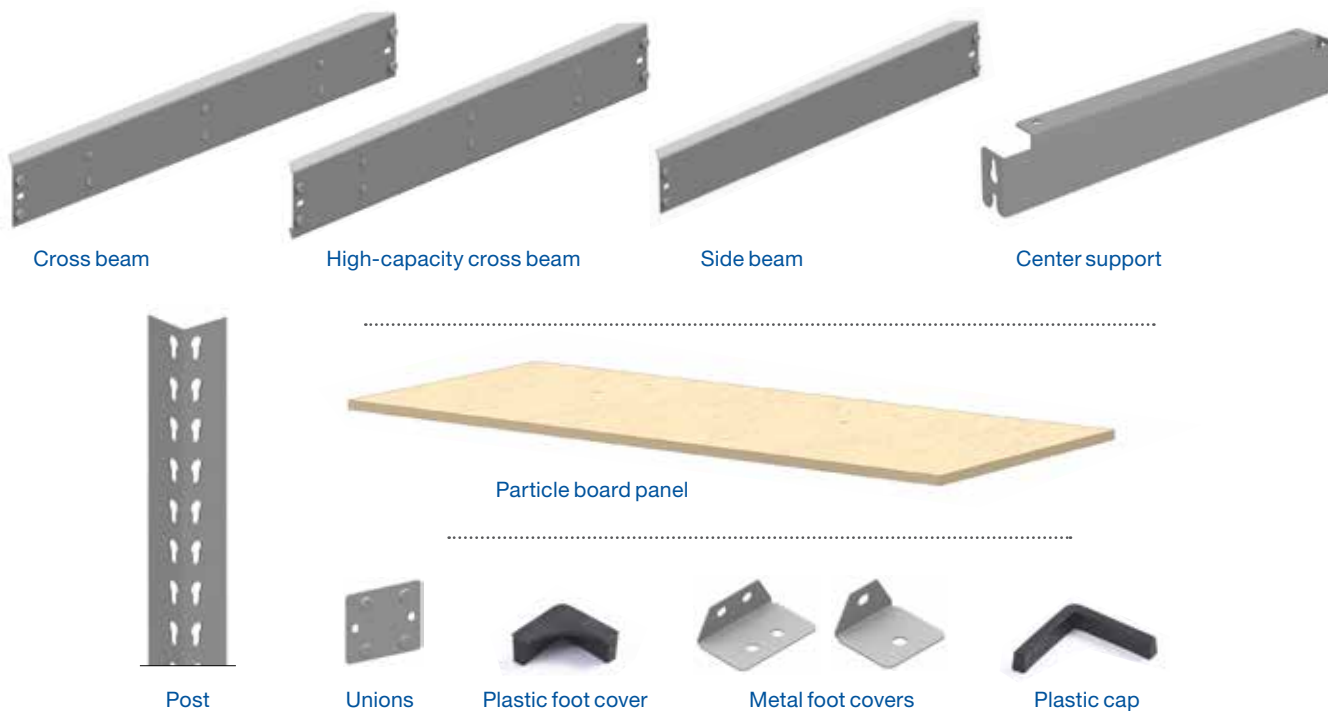


RAL 7037



Basic components

1. Post
2. Cross beam
3. Particle board panel
4. Side beam
5. Center support
6. Plastic foot cover



LENGTH COMPONENTS													
Length	12"	15"	18"	24"	30"	36"	42"	48"	60"	72"	84"	96"	120"
Post										x	x	x	x
Center support	x	x	x	x	x	x	x	x					
Cross beam								x	x	x	x	x	
High-capacity cross beam										x	x	x	
Side beam	x	x	x	x	x	x	x	x					

MAXIMUM LOAD PER SHELF											
Depth	Bays 12" / 15" / 18" / 24"						Bays 30" / 36" / 42" / 48"				
		48"	60"	72"	84"	96"	48"	60"	72"	84"	96"
Cross beam	0 N STS	1,870	1,230	420	–	–	1,710	1,230	440	–	–
	1 N STS	2,420	1,940	990	400	250	1,810	1,410	990	400	250
	2 N STS	–	2,000	1,100	750	530	–	1,540	1,100	750	530
High-capacity cross beam	0 N STS	2,310	1,760	1,320	880	550	1,870	1,760	1,290	830	440
	1 N STS	2,530	1,980	1,340	1,320	1,200	2,030	1,810	1,590	1,370	1,100
	2 N STS	–	2,310	1,540	1,430	1,280	–	2,310	1,760	1,540	1,280

Maximum load per shelf in lb. Shelves with 5/8" thick particle board panels.

MAXIMUM LOAD PER BAY								
N° Levels	Post 84"		Post 96"		Post 120"		Post 144"	
	Per level	Per bay	Per level	Per bay	Per level	Per bay	Per level	Per bay
3	2,310	6,930	2,290	6,870	---	---	---	---
4	2,150	8,600	2,140	8,560	1,280	5,120	1,190	4,760
5	1,870	9,350	1,850	9,250	1,210	6,050	1,120	5,600
6	1,650	9,900	1,650	9,900	1,100	6,600	1,060	6,360
7	–	–	1,430	10,010	1,060	7,420	990	6,930
8	–	–	1,100	8,800	920	7,360	900	7,200
9	–	–	–	–	880	7,920	860	7,740
10	–	–	–	–	–	–	840	8,400

Maximum load per bay in lb.



Metal Point 2

An attractive design means these shelves can be adapted to any setting where medium size loads need to be stored.

Particle board panels provide support for up to 1,102 lbs, uniformly distributed per load level.

Standard colors

Posts



RAL 5019



RAL 7037

Cross beams



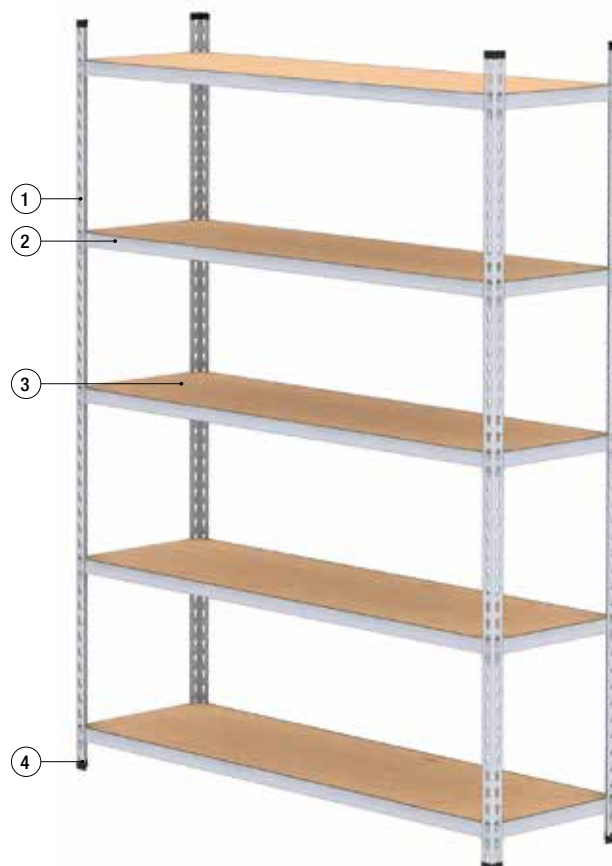
RAL 2004

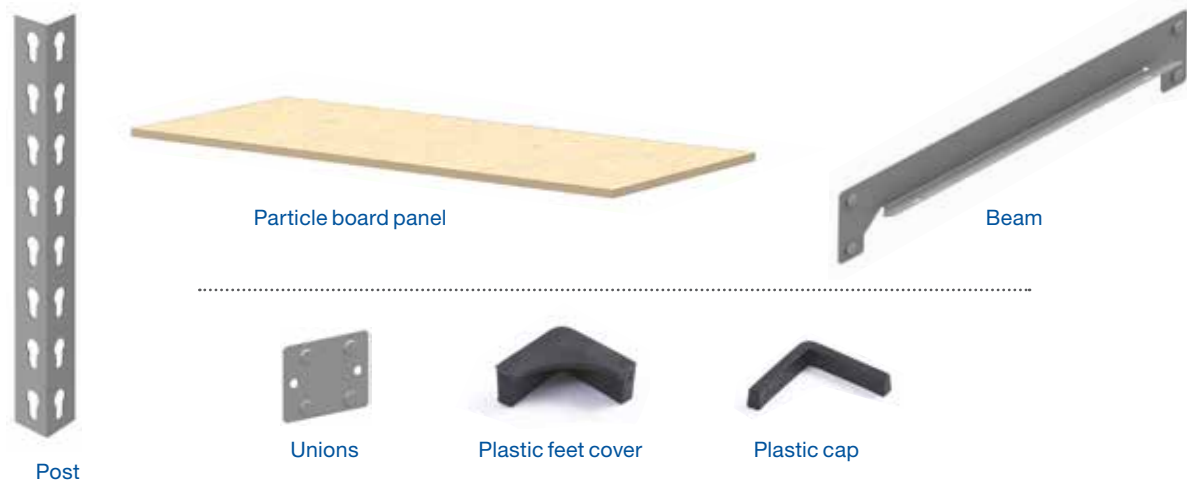


RAL 7037

Basic Components

1. Post
2. Beam
3. Particle board panel
4. Plastic foot cover





LENGTH COMPONENTS

Length	12"	15"	18"	24"	30"	36"	42"	48"	60"	72"	84"	96"	120"
Post										x	x	x	x
Cross beam	x	x	x	x	x	x	x	x	x				
Side beam	x	x	x	x	x	x	x	x	x				

MAXIMUM LOAD PER SHELF

Depth	24"	36"	42"	48"
12"	470	340	270	250
15"	550	390	310	280
18"	700	450	350	290
24"	780	490	400	320

Maximum load per shelf in lb.
Shelves with 5/8" thick particle board panels.

MAXIMUM LOAD PER BAY

N° Levels	Post 87"		Post 96"		Post 120"	
	Per level	Per bay	Per level	Per bay	Per level	Per bay
3	660	1,980	440	1,320	–	–
4	950	3,800	670	2,680	460	1,840
5	1,050	5,250	830	4,150	580	2,900
6	1,070	6,420	870	5,220	690	4,140
7	–	–	860	6,020	750	5,250
8	–	–	830	6,640	750	6,000
9	–	–	–	–	710	6,390

Maximum load per bay in lb.

Applications

This system offers a wide range of versatile solutions, such as shelves, benches, tables, cupboards and more.





EASY
TO
INSTALL

ASSEMBLY IS EASY! ALL YOU NEED IS A RUBBER MALLET TO PUT THE SHELVING UNIT TOGETHER.





Tel. 1-877-632-2589 - info@interlakemecalux.com - interlakemecalux.com

SALES OFFICES

CHICAGO
1600 North 25th Ave.
Melrose Park, IL 60160

DALLAS
12301 N Stemmons Freeway,
Suite # 110
Farmers Branch, TX 75234

SAN DIEGO
8607 Ave. De La Fuente
San Diego, CA 92154

PRODUCTION PLANTS

CHICAGO
1600 North 25th Avenue
Melrose Park, IL 60160

MATAMOROS
Las Rusias 2700,
Industrial del Norte
Matamoros Tamaulipas,
C.P. 87316

PONTIAC
701 Interlake Drive
Pontiac, IL 61764

SUMTER
1925 Corporate Way
Sumter, SC 29154

TIJUANA
Blvd. Bellas Artes, 9001
Ciudad Industrial Nueva Tijuana
Tijuana, B.C. - C.P. 22444

OFFICES WORLDWIDE

Argentina, Belgium, Brazil, Canada, Chile, Czechia, Colombia, France, Germany, Holland, Italy, Mexico, Peru, Poland, Portugal, Slovakia, Spain, Turkey, United Kingdom and Uruguay.



The contents in this document refer exclusively to Mecalux products and are for informational and promotional purposes only. The information contained herein does not form the basis for warranty or guarantee. Mecalux reserves the right to modify without prior notice the data, figures, products and finishes in the catalog.